

# Plug and Play Gigabit POE+ Switch, VLAN, 60W

6-Port Gigabit including 4x30W PoE, 2x1000T Uplink

POE-GSH420-60

airlive®



802.3at  
30w

Gigabit  
RJ45

-20°C~55°C

Hardware  
VLAN

PoE  
Watchdog

Extend Mode  
250m

## Overview

### 6-Port Gigabit PoE+ Switch with VLAN | PoE Watchdog and dual Uplink

Compliant with the PoE technology 802.3at/af, the AirLive POE-GSH420-60 switch supports a standard power of 15.4W (802.3af) and has a max of 30W (802.3at) on Port 1~4 with 2 Gigabit Uplink ports. The switch automatically detects and adaptively supplies needed power to connected PoE devices; for non-PoE devices, it will just transfer data intelligently.

For the application where management is not really needed but VLAN is useful and budget is controlled, the AirLive POE-GSH420-60 can help. Using a smart DIP-switch to turn the POE-GSH420-60 VLAN feature and PoE Watchdog on. Moreover, the switch also supports a Extend mode which allows data and power up to 250meter at 10Mbps over a Cat.5e cable. This helps where a PD is installed far away, and a power source is hard to get.

The AirLive POE-GSH420-60 tiny SOHO Gigabit switch supports PoE+ for PD, Gigabit for uplink, VLAN mode. It is the most cost-efficient client switch for various applications at Home or Office.



DIP Switch

PoE port Gigabit  
30W port 1~4

Gigabit Uplink

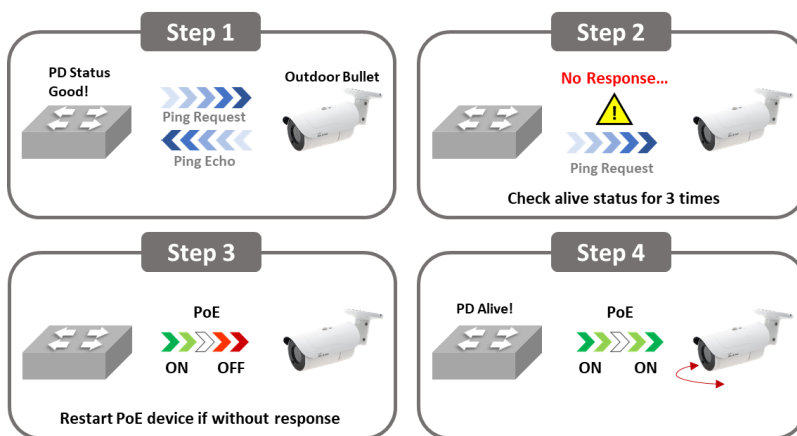
## Features

- All 6-port, each port delivers Gigabit high speed
- PoE power, supports 802.3at PoE+
- Priority Port
- Support PoE watchdog
- VLAN port Isolation
- Extended transmission of up to 250M in Extend Mode

## Efficient PoE Watch dog technology

The Switch POE-GSH420-60 supports PoE Watchdog when the Dip-Switch switches to either VLAN mode or Extend mode. After PoE Watchdog function enabled, the POE-GSH420-60 switch works as a virtual security guard. When the POE port is continuously powered but there is no traffic, the POE watchdog will be triggered. After 2 minutes of detection, the power supply will be stopped and then powered on.

The PoE watchdog is particularly useful for cameras. For example, when the switch is turned on, it will recognize the front camera 24 hours a day, 7 days a week. If there is no data traffic from the camera, the camera is considered to be frozen, and the PoE watchdog is used to restart the front camera to solve the problem.



## VLAN and Extend Mode

The POE-GSH420-60 switch can in Extend mode reach a distance of up to 250m(limited at 10Mbps), this can be very useful in locations where it hard to get power to turn on your PD device. The Extend mode makes this easier. When VLAN mode is enabled the PoE port VLAN isolation function will start to work. In this mode PoE ports (1~4) cannot communicate with each other and can only communicate with the UP-Link ports.

Model	AirLive POE-GSH420-60
<p><b>Hardware</b></p> <ul style="list-style-type: none"><li>• <b>Device Interface:</b> 4 x 30W PoE 10/100/1000 RJ45 2 x Uplink Port Gigabit RJ45 6-port totally</li><li>• <b>Standard</b> IEEE802.3u 100Base-TX / 100Base-FX IEEE802.3ab Gigabit 1000Base-T IEEE802.3at/af PoE IEEE802.3x IEEE802.3az Energy Efficient Ethernet</li><li>• <b>Industry standard compliant</b> CE/LVD EN60950</li><li>• <b>LED Indicators:</b> PWR (power supply), 1-4 PoE, 1-6 Link, 5-6 SPD (Uplink port)</li><li>• <b>Lighting Surge Protection:</b> 4KV 8/20us (general mode)</li><li>• <b>Mechanical</b> Aluminum case, IP-30</li></ul> <p><b>Power and PoE</b></p> <ul style="list-style-type: none"><li>• <b>Protocol:</b> IEEE802.3at (30W), IEEE802.3af (15.4W)</li><li>• <b>PoE Port:</b> 4</li><li>• <b>PoE Power Output / PoE Port:</b> max. 30 watts (port 1~4)</li><li>• <b>PoE Power Output / PoE switch:</b> max. 60 watts</li></ul> <p><b>Switch Architecture   Performance</b></p> <ul style="list-style-type: none"><li>• <b>Switching architecture: Store and Forward</b> Switch Capacity: 10Gbps Packet Forwarding Rate; 7.44Mpps MAC Address: 4K Cache: 1MB Transfer mode: Store and forward</li></ul>	<p><b>DIP Switch Control</b></p> <ul style="list-style-type: none"><li>• <b>VLAN (V):</b> Port isolation mode. In this mode PoE ports (1~4) cannot communicate with each other and can only communicate with the UP-Link port</li><li>• <b>Watchdog (D):</b> Enables the PoE port self-healing network restart (Watchdog) function. When a connected PD devices does not send data, the switch will repower the device automatically.</li><li>• <b>Extend (E):</b> Link extension mode, PoE power supply and data transmission distance can be extended to 250 meter at the transmission rate 10Mbps.</li></ul> <p><b>Power Supply</b></p> <ul style="list-style-type: none"><li>• <b>Input Voltage:</b> External AC/DC Adapter 52V/1.15A</li><li>• <b>Input Type</b></li></ul> <p><b>Environment</b></p> <ul style="list-style-type: none"><li>• <b>Operating Temperature:</b> -20°C to +55°C</li><li>• <b>Storage Temperature:</b> -40°C to +75°C</li><li>• <b>Operating Humidity:</b> 5%~90%, non-condensing</li><li>• <b>Storage Humidity:</b> 5%~95%, non-condensing</li></ul> <p><b>Standard package of switch</b></p> <ul style="list-style-type: none"><li>• <b>Product size:</b> 12.7 x 9.7 x 2.8 cm(L*W*H)</li><li>• <b>Package size:</b> 27.0 x 16.0 x 5.5 cm(L*W*H)</li><li>• <b>Product Weight/Package Weight</b> NW: 0.29Kg; GW: 0.8Kg</li><li>• <b>Package content:</b> 1 x Switch, 1 x AC/DC Adapter, 1 x Power Cord.</li></ul> <p><b>Standard carton package</b></p> <ul style="list-style-type: none"><li>• <b>Quantity:</b> 20 pcs / 1 carton</li><li>• <b>Dimensions</b> 53.5x 34.5x 28.8 cm(L*W*H)</li><li>• <b>Carton Weight</b> NW: 14.9Kg; GW: 15.4Kg</li></ul> <p><b>Ordering Information</b></p> <ul style="list-style-type: none"><li>• <b>Model:</b> POE-GSH420-60</li><li>• <b>Name:</b> Plug and Play Gigabit PoE+ switch, VLAN, 60W 6-Port including 4 x 30W PoE+, 2 x 1000T Uplink</li></ul>

\* Specification will be changed without prior notice

